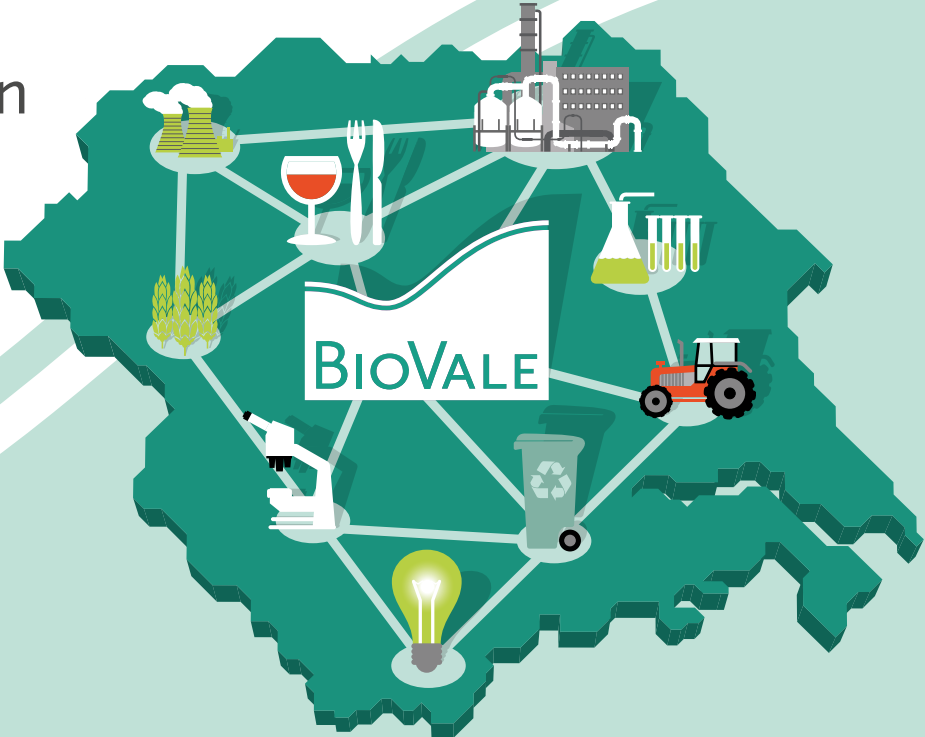




Connecting you to
biobased innovation
in Yorkshire and
the Humber



Yorkshire and the Humber: home to innovation for the UK's bioeconomy

BioVale enables Yorkshire and the Humber to access multi-trillion pound opportunities in the global bioeconomy by promoting and developing biobased innovation.

The use of biological resources as raw materials for industry is expanding rapidly. Yorkshire and the Humber is well-placed to benefit from this shift. Its outstanding research centres, wide range of biobased businesses and diverse agriculture make it one of the best places in the world for innovation in the bioeconomy.

We bring together over two hundred BioVale members with a shared interest in producing and using renewable, biobased raw materials.

Our strategic focus is on:

- Value from biowastes and by-products of agri-food supply chains
- High-value chemicals and advanced fuels from plants and microbes
- Smart collaboration between agri-tech and industrial biotech

We are governed by our Steering Group, which is drawn from both the private and public sectors, and supported by our small team of expert staff.

BioVale supports a bioeconomy that does not reduce the resources available for food production.

The Bioeconomy

In the bioeconomy, food, feed, energy and other materials are produced from renewable biological resources. Our emphasis is on a circular bioeconomy that captures value from by-products and wastes and ensures that essential carbon and nutrients are returned to the soil.



Fast-track plant breeding at the University of York. BioVale streamlines access to regional research and expertise.

Making new connections

We facilitate the networking, dialogue and partnerships needed to create biobased value chains and kick-start innovation for the bioeconomy.

Developing new value chains founded on raw materials from farming, biowaste or other biological sources often involves building links between sectors or disciplines that do not usually interact.



“BioVale has given us access to companies we wouldn’t have known otherwise and enabled projects to develop that wouldn’t have happened otherwise. Thanks to BioVale, we are now working with Drax Power to look at how they might get added value from the wood pellets they use before they are burnt for bioenergy production.”

Professor Simon McQueen Mason, University of York

We provide regular networking opportunities that bring together diverse groups of participants from different industries to form new working relationships.

Our team has an extensive range of active contacts across the bioeconomy, which we use to make those all-important one-to-one introductions. Businesses gain streamlined access to the region’s research, expertise and facilities via BioVale.

We build research partnerships between the public and private sectors and find the funding needed to support them. We connect innovative companies to a network of specialist investors.

BioVale members can interact directly through our Special Interest Group (p12) and our online Membership Directory, which currently features over a hundred business contacts.

Around four hundred people attend BioVale events each year.



BioVale provides regular opportunities for specialised networking on bioeconomy themes.

Building international links

We help regional businesses and academics improve their international links and connect with export markets in Europe and beyond.

Our strategic international relationships provide valuable access to bioeconomy markets overseas. We are a founding member of 3BI: Europe's leading bioeconomy intercluster. 3BI gives SMEs in our region access to biobased research organisations and companies in France, Germany and the Netherlands.



“After BioVale took us to an international conference, we started working with a Norwegian company to extract materials from seaweed. We are now collaborating with this company to scale up the process, with the help of funding from the Norwegian government.”

Beryl Archer, Sci Green Innovations

We are also partnered with international bioeconomy organisations through the following projects:

- **Agrimax** is developing and demonstrating the production of multiple, high-value products from crop and food-processing waste
- **BioBase4SME** is a network of bioeconomy experts offering professional innovation support services to SMEs and start-ups
- **Beechwood International** supports international collaboration on advanced biorefining of wood and crops such as sugar beet

Our members find new export markets for their products and services through our promotion at international trade fairs or via interactions with trade delegations hosted by BioVale.

We are also developing connections with clusters in Australia, East Africa and South America.



Yorkshire SME Sci Green Innovations is exporting its services to Norway, with the help of promotion from BioVale.

Raising the region's profile

Yorkshire and the Humber's reputation for innovation in the bioeconomy is growing, with the help of BioVale's advocacy and promotion.

We provide a voice for the regional bioeconomy with policy makers, regulatory authorities and other decision makers. BioVale featured prominently in the Government's 2015 report, *'Building a High-Value Bioeconomy'*.

In 2016, a Government delegation, including the Government's Chief Scientific Adviser (CSA), Sir Mark Walport visited the BioVale Steering Group to consult them on the potential value of the waste-based bioeconomy.

We also helped lead a successful bid for the Government to commission a Science and Innovation Audit of the north of England's bioeconomy.

We support UK trade and inward investment, working with organisations such as the Department for International Trade (DIT) and Make it York as well as specialist investors to attract private sector investment in the region's bioeconomy and encourage biobased businesses to expand or relocate into the area.

We promote the region's innovative bioeconomy through exhibits and presentations at biobased conferences and trade fairs as well as through media coverage.



“BioVale has unquestionably put the region's bioeconomy on the map and raised awareness among policy makers. Evidence of BioVale's impact is the Government's recent commissioning of a Science and Innovation Audit of the north of England's bioeconomy.”

Tim Frenneaux, York, North Yorkshire and East Riding Local Enterprise Partnership



Sir Mark Walport conferred with the BioVale Steering Group during a Government fact-finding mission on the waste-based bioeconomy.

Addressing skills and knowledge gaps

We help ensure that the region's workforce is equipped with the specialist skills and knowledge needed to compete in the fast-moving bioeconomy.

BioVale workshops provide tailored training and networking. We bring in top-level experts to discuss the latest developments in biobased subjects such as 'Optimising your AD plant', 'High-value products from agricultural waste' and 'Value from unavoidable food waste.'



"The Biocamp week has been excellent. It has been invaluable to be with other entrepreneurs who are at various stages of their businesses – to bounce ideas off each other, share our woes and successes as well as to receive advice from the brilliant speakers."

Sinead Fortune, Urban Catch Aquaponics

We also encourage peer-to-peer learning via our Special Interest Group (p12) and our networking opportunities.

Biobased entrepreneurs are equipped with the tools they need to commercialise their idea and grow their company through our Biocamps – intensive courses, delivered as part of the BioBased4SME project – and other support such as mentoring and specialist investor pitching events.

We match innovative biobased companies with strongly motivated students from Yorkshire's universities and colleges for productive internships, apprenticeships and work placements.

Our regular newsletters keep around 700 subscribers up-to-date with regional bioeconomy news and opportunities.



Hosting a regional Special Interest Group

Our Special Interest Group (SIGs) provides topic-specific forums for networking, exchange of views and peer-to-peer learning.

This voluntary group of BioVale members share an interest in a particular aspect of the bioeconomy and have a strong regional focus.

Joining the SIG enables participants to:

- ✔ Make valuable local contacts
- ✔ Gain insight, develop their knowledge and share best practice
- ✔ Discuss regional developments and issues
- ✔ Help promote regional expertise and assets

We currently have a SIG on anaerobic digestion (AD).

Yorkshire and the Humber has a thriving AD sector, with a wealth of specialist knowledge among operators, consultants, researchers and technologists. Active since April 2016, our AD SIG now has over 150 members and has organised a variety of site visits and workshops.



“Being part of Biovale’s AD SIG has been really helpful to Amur, as a new business in the industry. The group has provided us with some good networking opportunities – allowing us to share ideas, make new contacts and showcase our own AD plant in South Milford.”

Christine Parry, Amur



Our Special Interest Group on anaerobic digestion organises regular workshops and site visits.

Making an impact

Effective networks for the regional bioeconomy



Over **200** members including representatives of **133** companies and **15** academic institutions



Over **700** newsletter subscribers from more than **400** organisations



Mediation of more than **100** new business-business interactions



Around **400** participants each year to workshops and networking events

International recognition of Yorkshire and the Humber



International research collaborations with **26** research organisations and **31** companies from **19** countries



Links to **400** biobased SMEs across Europe via the 3Bi intercluster



Mandates to represent **13** SMEs in a **€3.7** billion public-private partnership with the EU

Support for economic development



Links with more than **30** investors specialising in different aspects of the bioeconomy



5 biobased companies established in the region in order to engage with the local knowledge base








Intensive entrepreneurship training delivered to **17** bioeconomy SMEs and start-ups

Our membership

BioVale membership provides specialised support in the rapidly expanding bioeconomy and enables development of your contacts, skills and profile in this important new sector.

Our members include representatives of major corporations, SMEs, start-ups, academics, investors and policy makers.

Joining BioVale will help you to:

-  Network via our events, Special Interest Group and membership directory
-  Get streamlined access to the region's world-class R&D expertise in biorenewables
-  Find European funding to develop your bio-based product or service
-  Connect with international markets via our links with other clusters
-  Stay up to date through our newsletters, workshops and training events



Membership is easy to apply for online via the BioVale website and is currently free of charge.

BioVale receives funding
support from the following:




BioVale

1 Hassacarr Close


Dunnington

York, YO19 5SN

United Kingdom

 +44 (0)1904 328045

 info@biovale.org

 biovale.org

 [@BioVale_Cluster](https://twitter.com/BioVale_Cluster)



Printed on 100% recycled material.